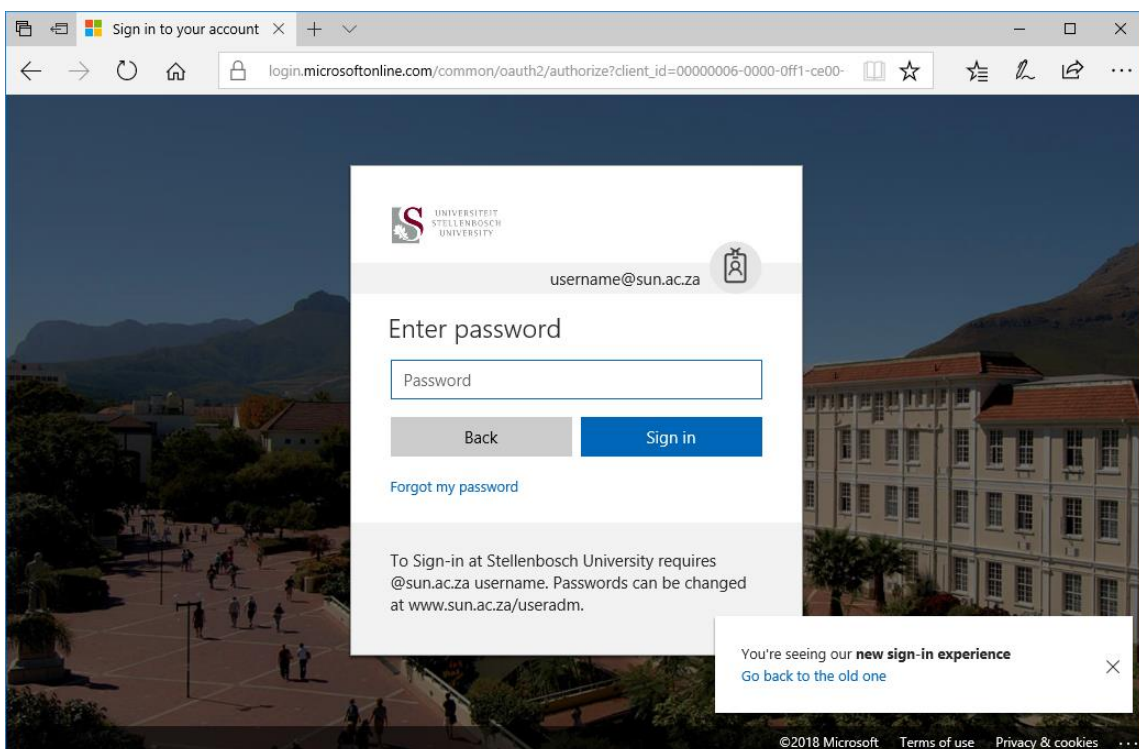
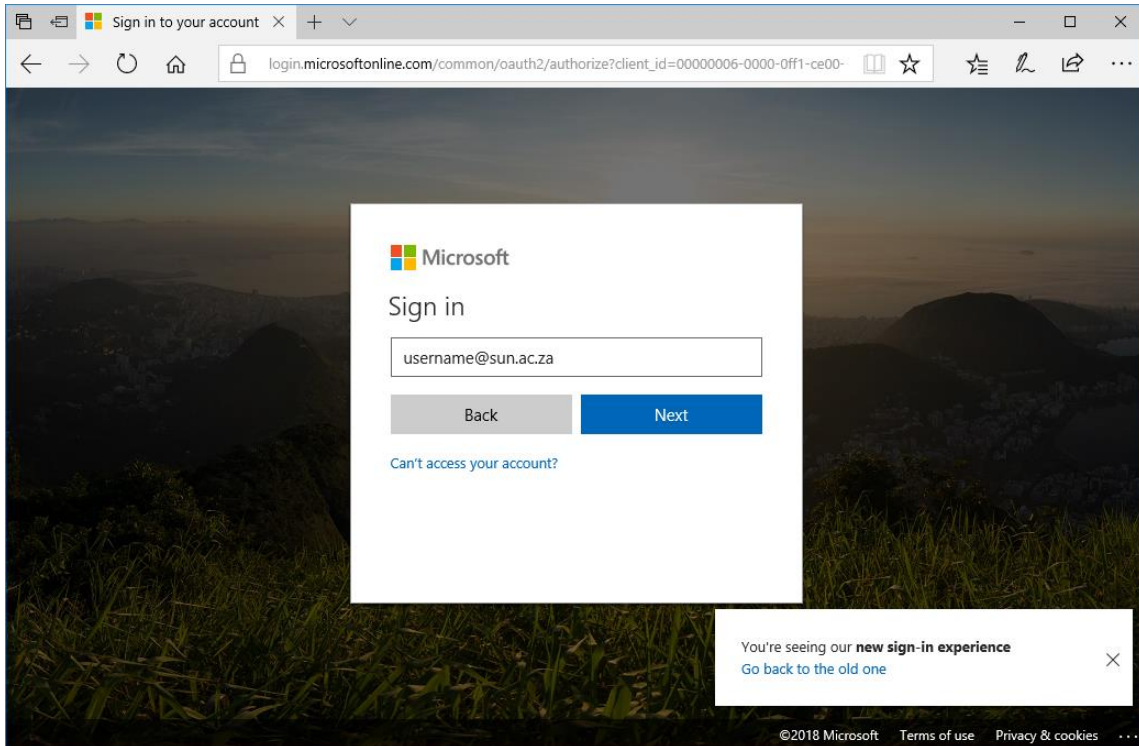


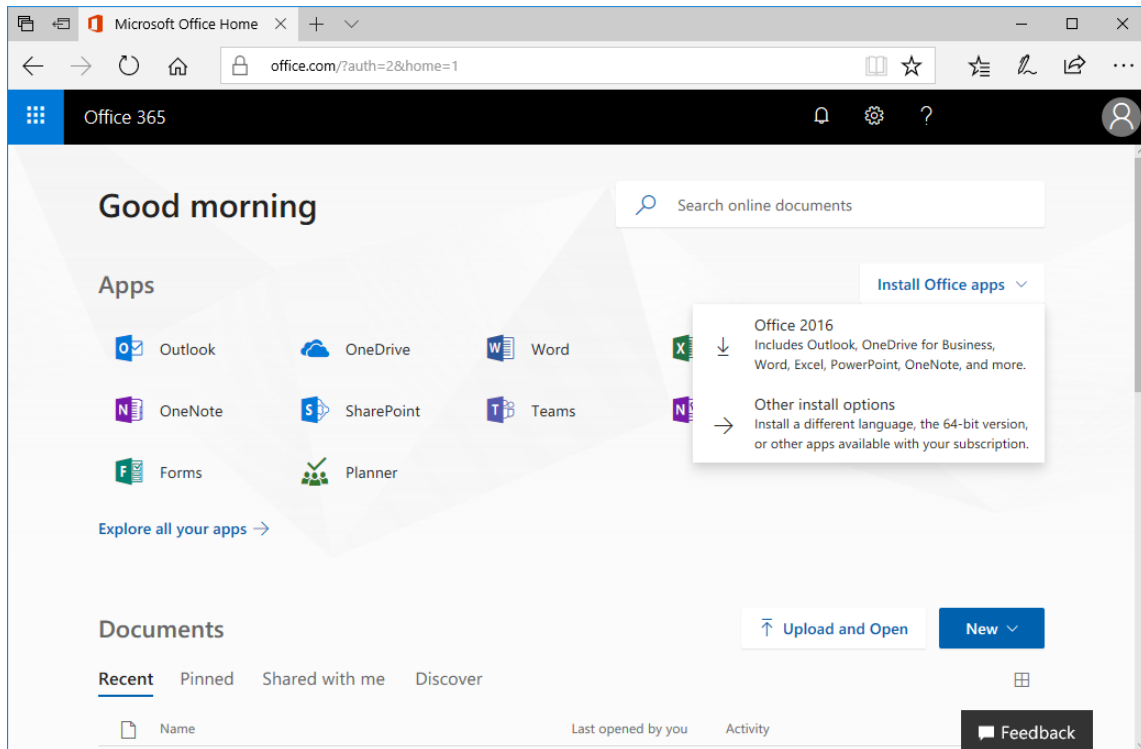
Installing Office 365

Log in to <http://portal.office.com> with your university credentials



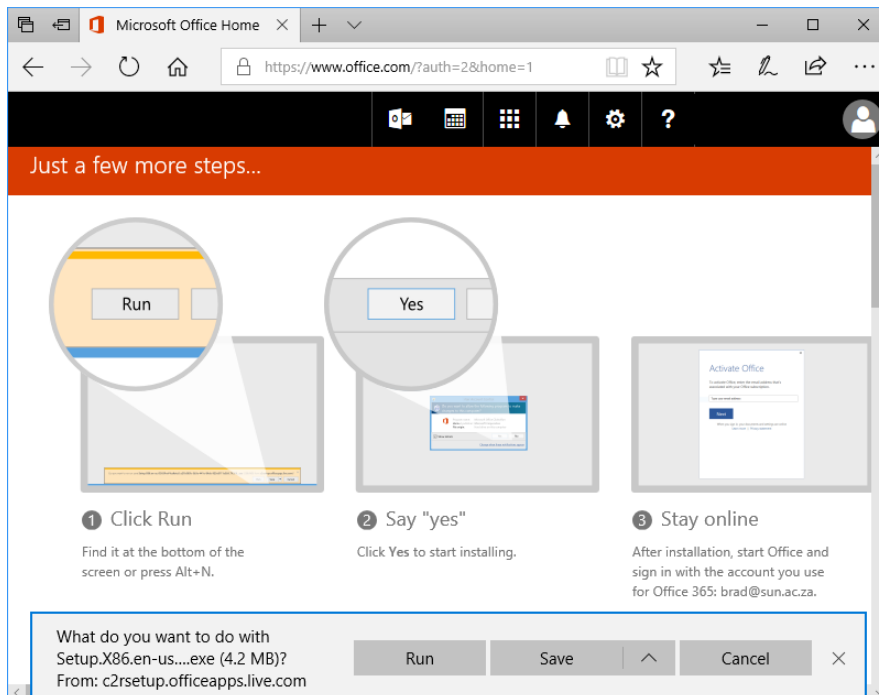
Once logged in, click the **Install Office apps** button and select **Office 2016**

Note: Even though the button says Office 2016, you will be installing the Office 365 version of Office 2016. Please click [here](#) for info about those differences

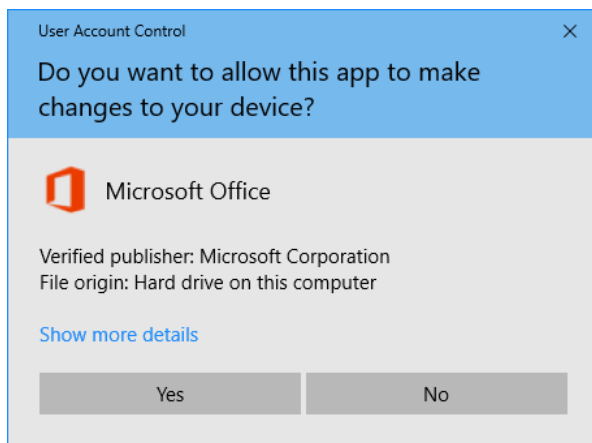
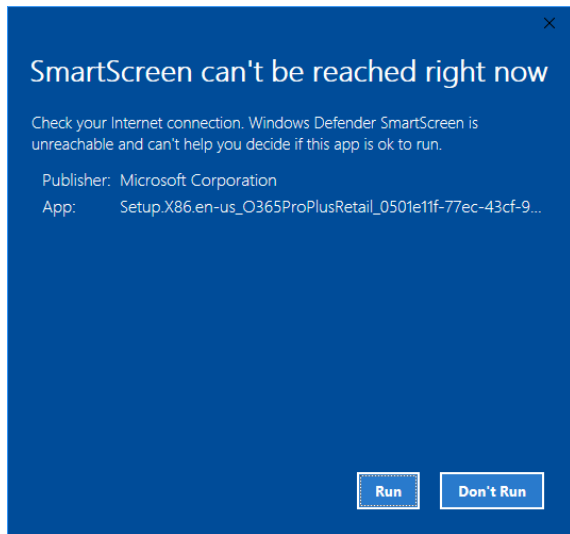


Please note: if you have any version of office installed, it needs to be uninstalled before the Office365 version is installed. Installation will fail if this is not done.

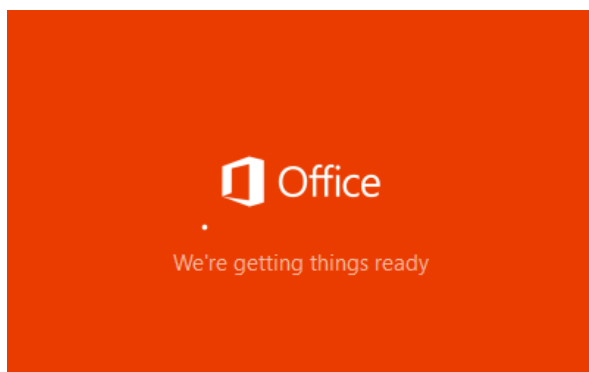
You will be prompted to run the **Setup.x86.en-us.exe**. Select **Run** to start the install

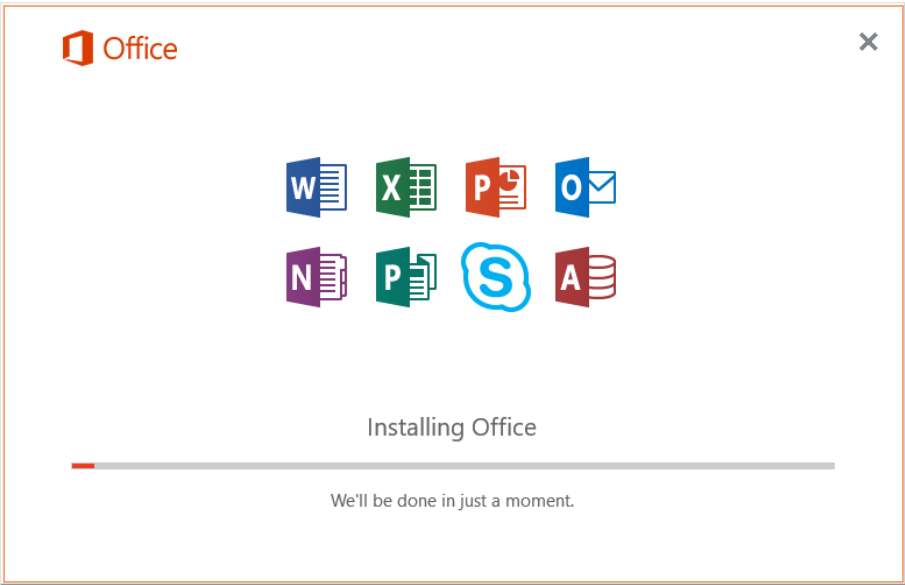


Click **Run** on the SmartScreen window and **Yes** on the UAC window



Installation will now start





Click **C**lose once completed

