



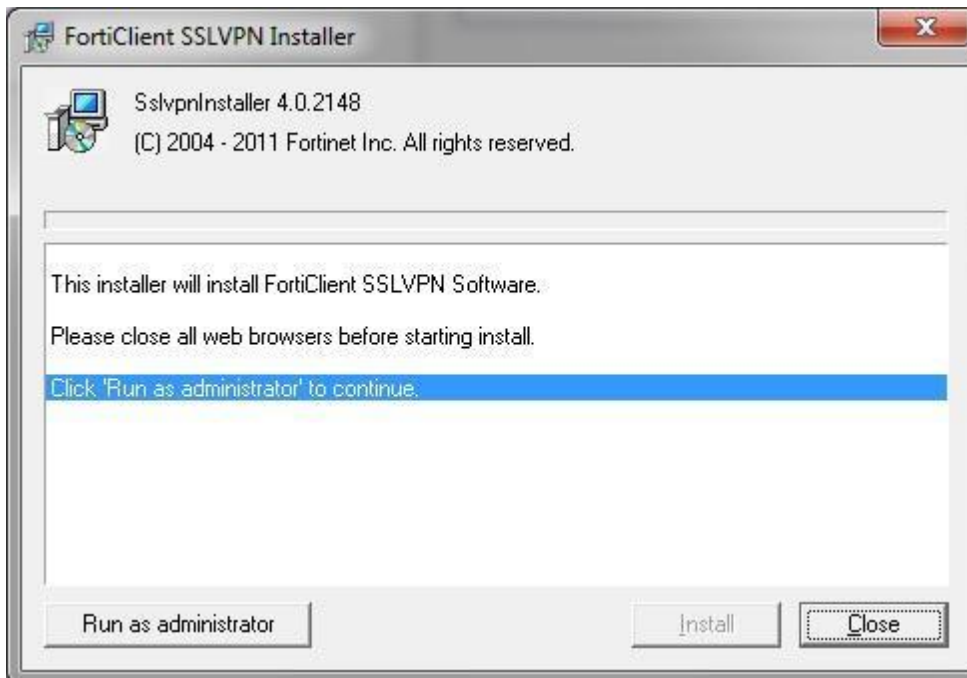
Forticlient Installation and Configuration

Installation

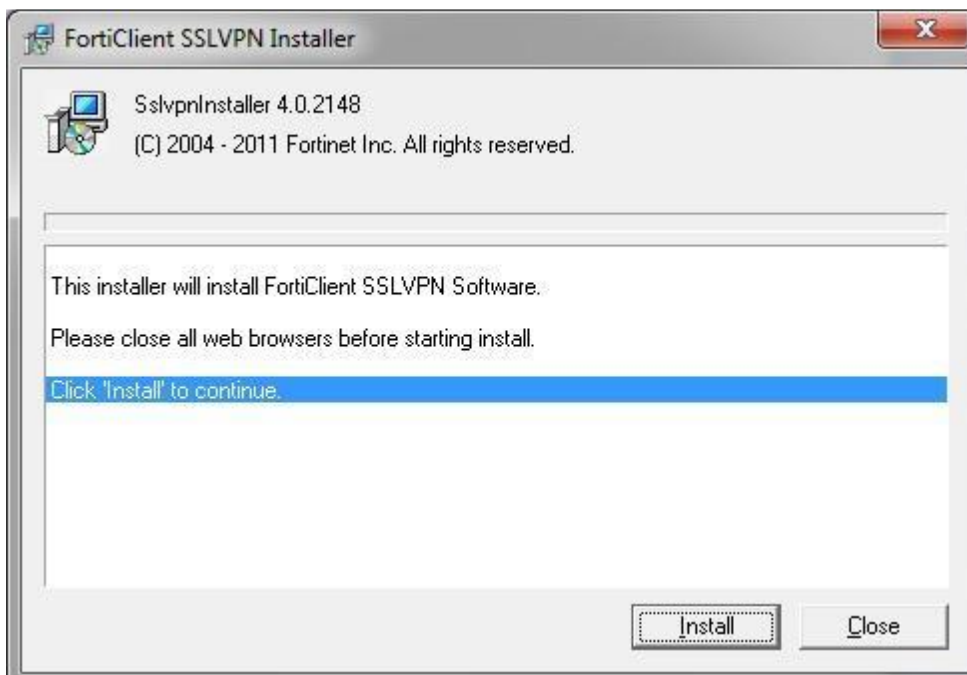
Download and install the client from

ftp://ftp.sun.ac.za/fortisslvpnclient/sslvpnclient_win_4.4.2303.exe

Click **Run as administrator**

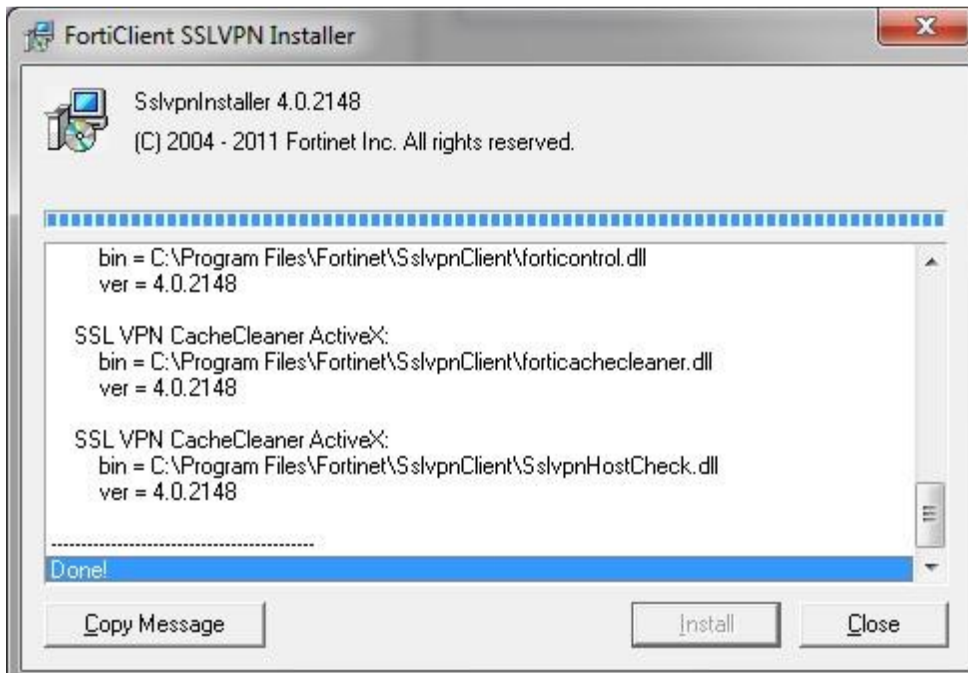


Click **Install**



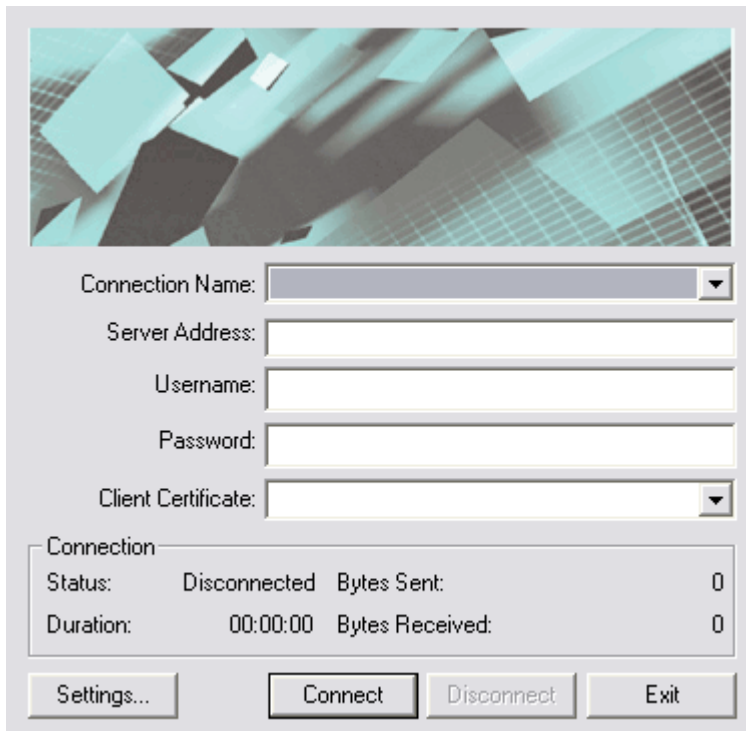


Click **Close** when installation has finished



Configuration

Open **FortiClient SSLVPN** from the Start Menu





Click **Settings**

A screenshot of the SSL VPN Settings dialog box. The dialog is titled "Global Settings" and contains a checkbox labeled "Keep connection alive until manually stopped". Below this is a "Connections" section with a table for listing connections. The table has two columns: "Connection Name" and "Description". To the right of the table are three buttons: "New Connection...", "Edit...", and "Delete". Below the table is a "Settings of selected connection" section with several input fields: "Connection Name:", "Description:", "Server Address:", "Do not warn about server certificate validation failure" (checkbox), "User Name:", "Password:", and "Client Certificate:". At the bottom of the dialog are "OK" and "Cancel" buttons.

Click **New Connection** and fill in the detail like below, using your username and password

A screenshot of the "Connection Settings" dialog box. The fields are filled with the following information: "Connection Name: fwvpn", "Description: fwvpn", "Server Address: fwvpn.sun.ac.za:443", "Do not warn about server certificate validation failure" (checkbox is unchecked), "User Name: j@sun", "Password: *****", and "Client Certificate:" (empty). At the bottom are "OK" and "Cancel" buttons.

Click **OK**



Mark tickbox to **Keep connection alive until manually stopped**

The screenshot shows the "Global Settings" dialog box. The "Global Settings" section has a checked checkbox for "Keep connection alive until manually stopped". Below this is the "Connections" section, which contains a table with one entry: "fwvpn" for both the "Connection Name" and "Description" columns. To the right of the table are three buttons: "New Connection...", "Edit...", and "Delete". Below the table is a "Settings of selected connection" section with the following fields: "Connection Name" (fwvpn), "Description" (fwvpn), "Server Address" (fwvpn.sun.ac.za:443), a checkbox for "Do not warning about server certificate validation failure" (unchecked), "User Name" (empty), "Password" (masked with asterisks), and "Client Certificate" (empty). At the bottom of the dialog are "OK" and "Cancel" buttons.

Click **Connect** to start the VPN connection

The screenshot shows the SSL VPN connection dialog box. It features a header image with a teal and black abstract design. Below the image are several input fields: "Connection Name" (a dropdown menu showing "fwvpn"), "Server Address" (text box with "fwvpn.sun.ac.za:443"), "Username" (text box with "fwvpn"), "Password" (masked text box), and "Client Certificate" (a dropdown menu). Below these fields is a "Connection" section with a table showing "Status: Disconnected", "Bytes Sent: 0", "Duration: 00:00:00", and "Bytes Received: 0". At the bottom are four buttons: "Settings...", "Connect", "Disconnect", and "Exit".